

Homework No. 04 (Fall 2022)

PHYS 205B: UNIVERSITY PHYSICS

School of Physics and Applied Physics, Southern Illinois University–Carbondale

Due date: Tuesday, 2022 Oct 4, 9:30 AM, on D2L

Instructions

- You are encouraged to use any of the resources to complete this homework. However, the extent to which you depend on resources while doing this homework is a measure of how much extra work you need to put in to master the associated concepts. Solutions should be the last resource and are available at

<http://sphics.com/tc/202108-SIU-P205B/>.

- Describe your thought process in detail and organize it clearly. Make sure your answer has units and the right number of significant digits.
- After completion, scan the pages as a single PDF file, and submit the file on D2L (under Assesments → Assignments).

Problems

1. (**10 points.**) Derive the capacitance of a cylindrical capacitor consisting of coaxial conducting cylinders of length L . The capacitor consists of a solid cylinder of radius a and another cylindrical conducting shell of radius $b > a$.

Solution

2. (**10 points.**) A capacitor of capacitance 10.0 nF is connected to a 10.0 V battery. Let us assume that the capacitor consists of two parallel plates of area A separated by distance d .
 - (a) Determine the charge accumulated on each plate of the capacitor.
 - (b) Determine the energy stored in the capacitor.

Solution

3. (**10 points.**) Determine the equivalent capacitance between points A and B in the circuit in Figure 1. Given $C_1 = 1.0\ \mu\text{F}$, $C_2 = 2.0\ \mu\text{F}$, $C_3 = 3.0\ \mu\text{F}$, and $C_4 = 4.0\ \mu\text{F}$.

Solution

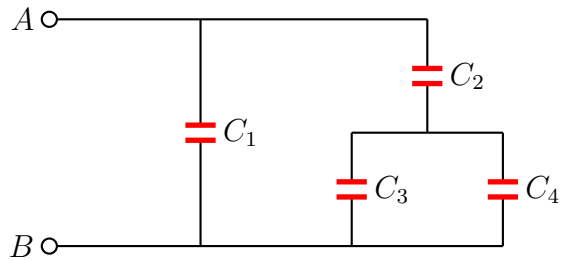


Figure 1: Problem 3

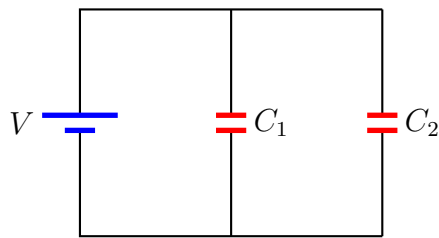


Figure 2: Problem 4

4. (10 points.) A potential difference $V = 10.0 \text{ V}$ is applied across a capacitor arrangement with two capacitances connected in parallel, $C_1 = 10.0 \mu\text{F}$ and $C_2 = 20.0 \mu\text{F}$.
- Find the equivalent capacitance.
 - Find the charges Q_1 and Q_2 on each of the capacitors.
 - Find the voltages V_1 and V_2 across each of the capacitors.
 - Find the potential energies U_1 and U_2 stored inside each of the capacitors.
 - Find the ratio V_1/V_2 of the voltages across the capacitors.
 - Find the ratio Q_1/Q_2 of the charges on the capacitors.
 - Find the ratio U_1/U_2 of the potential energies stored inside the capacitors.

Solution

5. (10 points.) A potential difference $V = 10.0 \text{ V}$ is applied across a capacitor arrangement with two capacitances connected in series, $C_1 = 10.0 \mu\text{F}$ and $C_2 = 20.0 \mu\text{F}$.
- Find the equivalent capacitance.
 - Find the charges Q_1 and Q_2 on each of the capacitors.
 - Find the voltages V_1 and V_2 across each of the capacitors.
 - Find the potential energies U_1 and U_2 stored inside each of the capacitors.
 - Find the ratio V_1/V_2 of the voltages across the capacitors.

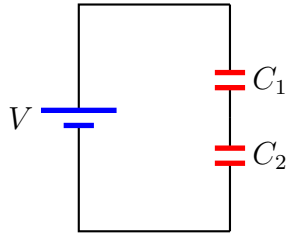


Figure 3: Problem 5

(f) Find the ratio Q_1/Q_2 of the charges on the capacitors.

(g) Find the ratio U_1/U_2 of the potential energies stored inside the capacitors.

Solution

6. (10 points.) In the circuit in Figure 4 determine the charge on capacitor C_3 . Let $V = 10.0 \text{ V}$, $C_1 = 10.0 \text{ nF}$, $C_2 = 20.0 \text{ nF}$, and $C_3 = 30.0 \text{ nF}$.

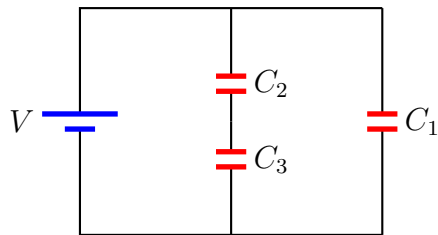


Figure 4: Problem 6.

Solution (Erratum: The units should be nF, not μF .)